



## L Series 36" Built-In Single Oven

Its unframed door design gives the Wolf L series 36" built-in single oven a contemporary look. Dual convection delivers superior results and faster cooking; the temperature probe gives you fine control. The easy-to-use electronic control panel rotates into position. When not in use, it's hidden behind a stainless steel panel.



Model SO36U/S.

### FEATURES

- Unframed door style in stainless steel finish.
- Dual convection logic control system.
- Ten cooking modes—bake, roast, broil, convection bake, convection roast, convection broil, convection, bake stone (accessory required), dehydrate (accessory required) and proof.
- Rotating glass touch control panel.
- Cobalt blue porcelain oven interior.
- Five-level rack guides with three adjustable oven racks; one full-extension easy glide, one full-extension door glide and one standard.
- Large viewing triple-pane window.
- Dual interior halogen lighting.
- Hidden bake element and recessed broil element.
- Temperature probe and receptacle.
- Self-clean, delayed start and Sabbath feature.
- Door hinge with hydraulic damper assures smooth opening and closing of the door.

### MODEL OPTIONS

Door Style

SO36U/S

Unframed

### ACCESSORIES

- Bake stone accessory, includes stone, rack and peel.
- Two-piece broiler pan and temperature probe.
- Set of three standard oven racks.
- One full-extension easy glide rack.
- Dehydration racks with door stop.

Accessories are available through your authorized Wolf dealer. For local dealer information, visit the find a showroom section of our website, [wolfappliance.com](http://wolfappliance.com).



Model SO36U/S  
Unframed Door Style



This appliance is certified by Star-K to meet strict religious regulations in conjunction with specific instructions found on [www.star-k.org](http://www.star-k.org).

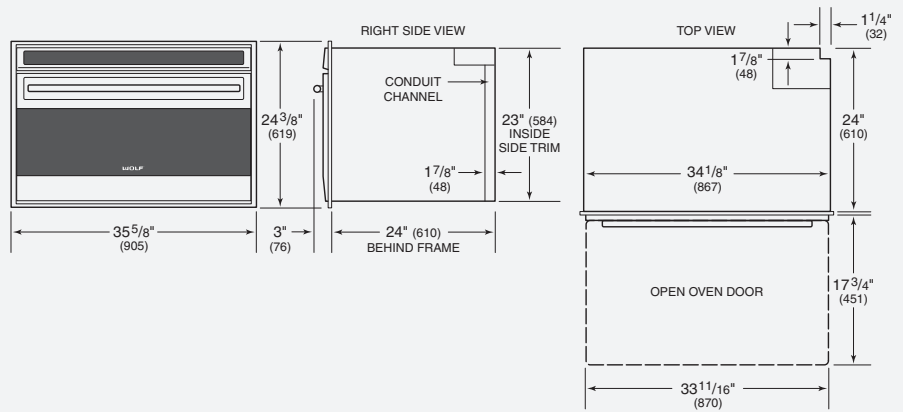


Rotating glass touch control panel.



## L Series 36" Built-In Single Oven

### OVERALL DIMENSIONS



Unit dimensions may vary by  $\pm 1/8$ ".

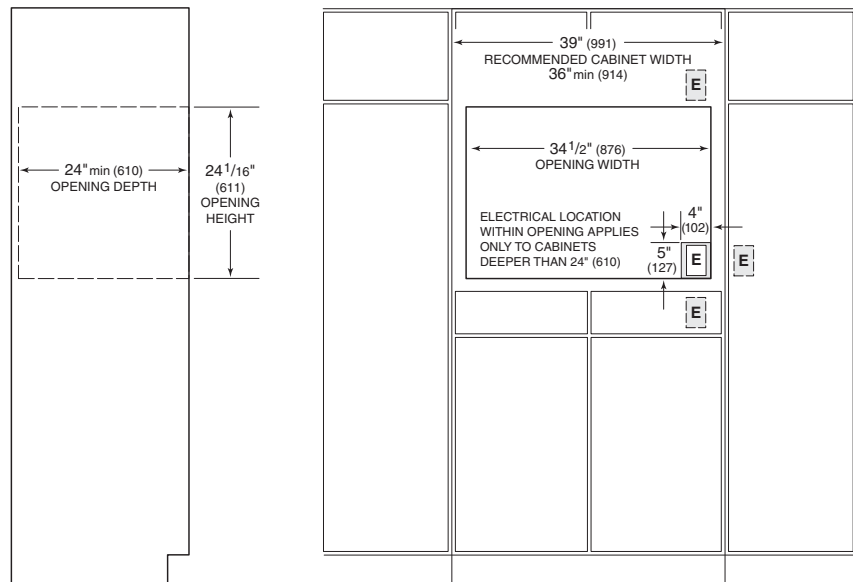
Dimensions in parentheses are in millimeters unless otherwise specified.

### SPECIFICATIONS

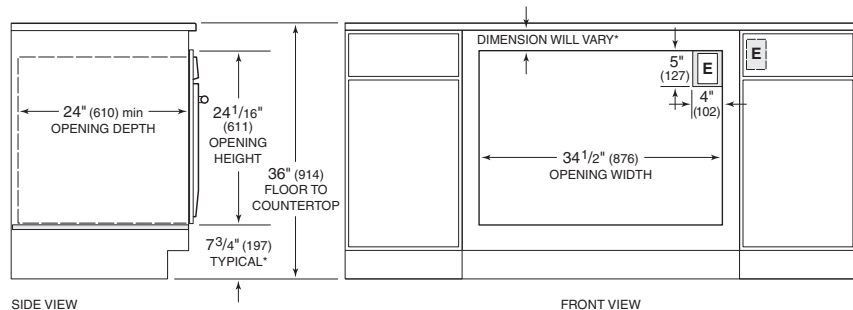
Overall Width	35 <sup>5</sup> / <sub>8</sub> "
Overall Height	24 <sup>3</sup> / <sub>8</sub> "
Overall Depth	24"
Oven Door Clearance	17 <sup>3</sup> / <sub>4</sub> "
Overall Oven Interior Capacity	4.4 cu ft
Oven Interior Dimensions	30" W x 13 <sup>1</sup> / <sub>4</sub> " H x 19" D
Minimum Cabinet Width	36"
Minimum Cabinet Depth	24"
Minimum Base Support	250 lbs
Opening Width	34 <sup>1</sup> / <sub>2</sub> "
Opening Height	24 <sup>1</sup> / <sub>16</sub> "
Electrical Requirements	240/208 V AC 60 Hz, 30 amp circuit
Conduit	3' flexible 4-wire
Electrical Rating	5.1 kW at 240 V 3.8 kW at 208 V
Total Amps	21
Shipping Weight	288 lbs

### INSTALLATION SPECIFICATIONS

#### Wall Application



#### Undercounter Installation



### INSTALLATION NOTES

Complete installation specifications can be found on our website, [wolfappliance.com](http://wolfappliance.com).

\*Dimension must accommodate height of oven trim.

**IMPORTANT NOTE:** Unless you are using cabinets deeper than 24", it is recommended that the electrical supply be placed in an adjacent cabinet within reach of the conduit. Choose the location shown in the illustrations that best suits your installation.