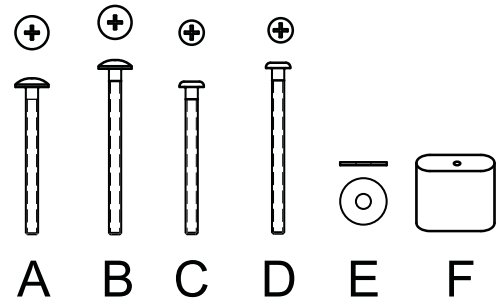


0000036, 0000037, 0000038, 0000039, 0000040, 0000041 -
3/4" Diameter Package Instructions (Classic, Carbon & Platinum Stainless Steel)

3/4" SS Handle Hardware Package

Refer to the chart below and the illustration to the right.

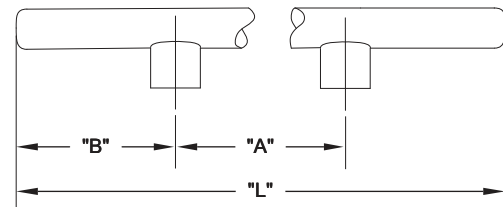
ITEM	QTY	PART NUMBER	DESCRIPTION
A	2	6110650	#10-24 x 2TR HD
B	2	6110660	#10-24x2-1/4TR HD
C	2	6110750	#10-24x2PAN HD
D	2	6110760	#10-24x2-1/4PAN HD
E	2	6240340	#10x1/4"x5/8"x.45SS WASHER
F	2	3512190-1-2	STAND OFF (S,B,P)



3/4" SS Handle Mounting Specs

Refer to the chart below and the illustration to the right.

Handle Part No.	" L "	" A "	" B "
3512360 18/3/4/S	18"	10-3/4"	3-5/8"
3512361 18x3/4/B	18"	10-3/4"	3-5/8"
3512362 18x3/4/P	18"	10-3/4"	3-5/8"
3512030 24x3/4/S	24-3/16"	16-1/4"	4"
3512031 24x3/4/B	24-3/16"	16-1/4"	4"
3512032 24x3/4/P	24-3/16"	16-1/4"	4"
3512300 33x3/4/S	33-3/16"	25-1/4"	4"
3512301 33x3/4/B	33-3/16"	25-1/4"	4"
3512302 33x3/4/P	33-3/16"	25-1/4"	4"
3512020 41x3/4/S	41-3/16"	33-1/4"	4"
3512021 41x3/4/B	41-3/16"	33-1/4"	4"



THROUGH HOLES = 7/32" TO 1/4" DIA
 COUNTERSINK HOLES = 11/16" DIA X 5/32"

