

CONTENTS

- 2 #10-16x1/2 Screw CR Truss HD
- 1 Instructions

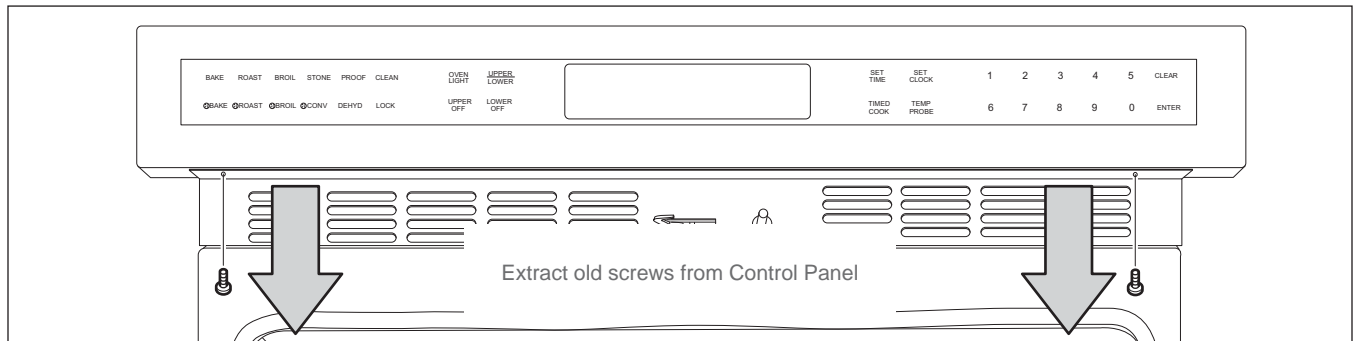
⚠ WARNING

TO AVOID ELECTRICAL SHOCK, DISCONNECT ELECTRICAL POWER TO UNIT BEFORE ATTEMPTING THIS REPAIR.

INSTRUCTIONS

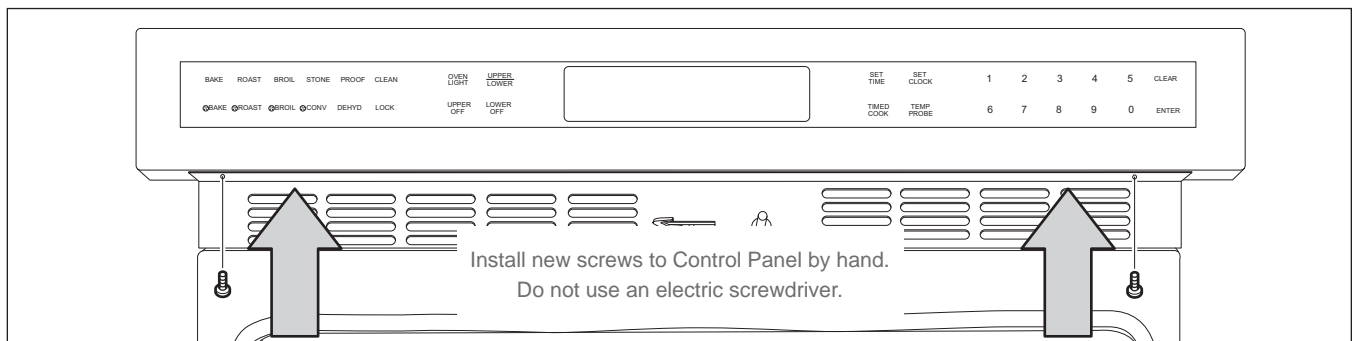
NOTE: Only install screws by hand. Do not use an electric screwdriver. Using an electric screwdriver will strip the screws.

- 1 Extract old screws from control head.



E Series Oven

- 2 Use a Phillips screw driver to install the new screws by hand.



E Series Oven

