

BI-36R/S



FEATURES

- Monitor and control remotely with Wi-Fi connectivity
- Fight spoilage and odors with a NASA-inspired air purification system
- Locks in cold air to ensure freshness with magnetic door seals
- Keeps produce fresher with high-humidity, sealed crisper and deli drawers
- Controls temperature within one degree of setpoint
- Ensures excellent visibility with bright lights
- Refer to freshness cards for tips on food preservation, use, and care

ACCESSORIES

- 90° Door Stop
- Air Purification Cartridge
- Egg Container
- Legacy 45 3/16" Pro Handle
- Legacy Dual Install Kit with 72" Pro Louvered Grille
- Legacy Dual Installation Kit
- Legacy Dual Installation Kit with 66" Pro Louvered Grille
- Legacy Grille Frame - 84"
- Legacy Stainless Steel Kickplate - Left Hinge
- Legacy Stainless Steel Kickplate - Right Hinge
- Legacy Stainless Steel Pro Louvered Grille - 84"
- Legacy Stainless Steel Side Panel
- Legacy Tubular Handle
- Stainless Steel Kickplate - Right Hinge
- Stainless Steel Pro Louvered Grille - 83"
- Stainless Steel Pro Louvered Grille - 88"
- White Side Panel
- Dual Installation Kit with Dual Wide Grille
- Stainless Steel Pro Handles
- Stainless Steel Tubular Handles

Accessories are available through an authorized dealer.
For local dealer information, visit subzero-wolf.com/locator.



HANDLE OPTIONS

PRO



TUBULAR



PRODUCT DETAILS

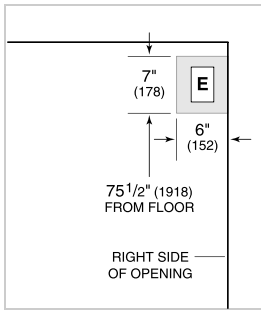
REFRIGERATOR

- LED refrigerator lights
- 4 glass refrigerator shelves (3 adjustable; 1 stationary)
- 1 high-humidity crisper drawer with adjustable dividers
- 2 storage drawers with adjustable dividers
- 5 door bins (3 adjustable; 2 stationary)
- 1 adjustable dairy compartment

PRODUCT SPECIFICATIONS

Model	BI-36R/S
Dimensions	36"W x 84"H x 24"D
Refrigerator Capacity	22.7 cu. ft.
Weight	420 lbs
Electrical Supply	115 VAC, 60 Hz
Electrical Service	15 amp dedicated circuit
Receptacle	3-prong grounding-type

ELECTRICAL



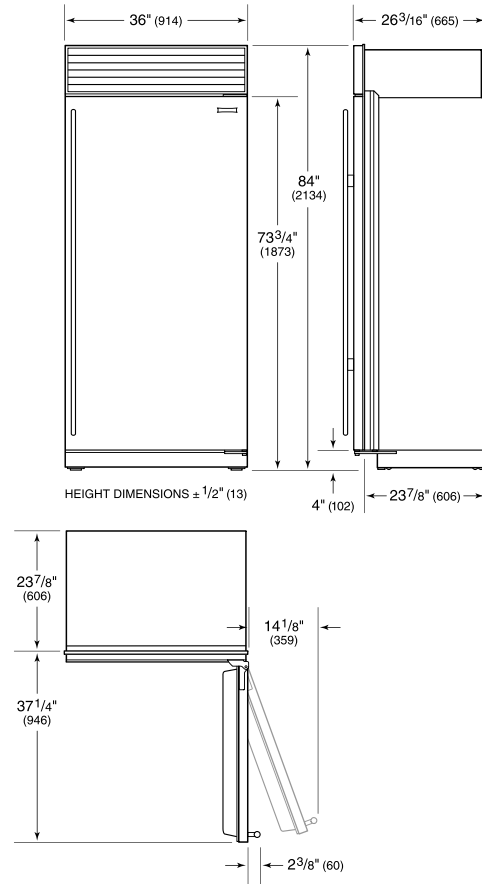
NOTE: Dimensions in parenthesis are in millimeters unless otherwise specified

INTERIOR VIEW

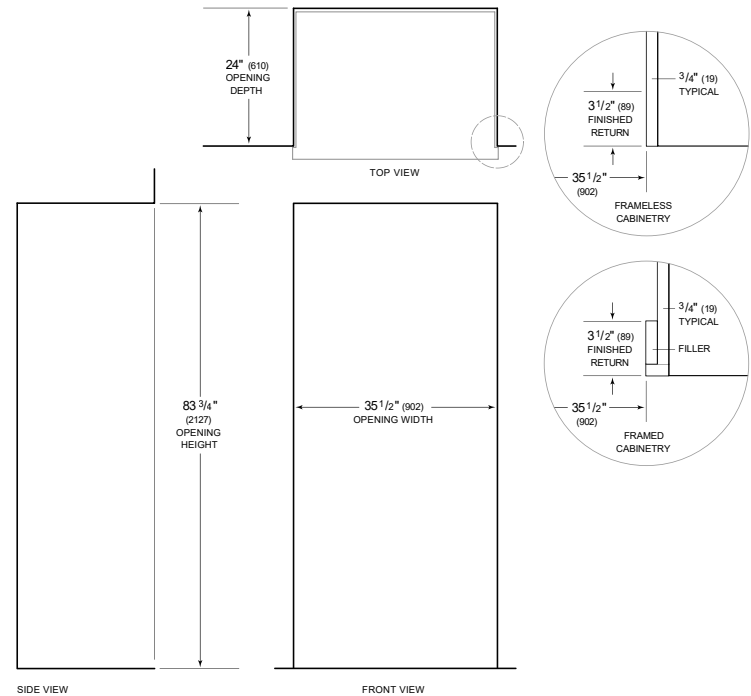


This illustration is intended for interior reference only and may not represent the exterior of the model being specified.

DIMENSIONS



STANDARD INSTALLATION



NOTE: 3 1/2" (89) finished returns will be visible and should be finished to match cabinetry
 Shaded line represents profile of unit.