

## VS24

### FEATURES

Select our chamber-style vacuum to handle liquids and fragile items (Can seal without vacuum, unlike countertop products)

Choose among four vacuum pressure settings and four heat-sealing levels

Includes a special attachment to seal and preserve opened wine bottles

Install near your Wolf ovens and other products for speed marinating and convenient sous vide prep

Conceal the drawer with hidden controls and handleless design

Designed for 24-30" panels

### ACCESSORIES

24" Black Glass Front Panel

24" Stainless Front Panel

30" Black Glass Front Panel

30" Stainless Front Panel

Integrated Front Panel

Large Bags - 9 1/2" x 13 5/8"

Small Bags - 7 1/4" x 10 7/8"

Wine Stoppers

Accessories available through an authorized dealer.  
For local dealer information, visit [subzero-wolf.com/locator](https://subzero-wolf.com/locator).



### FRONT PANEL OPTIONS



24" DRAWER FRONT STAINLESS PANEL



30" DRAWER FRONT STAINLESS PANEL



24" DRAWER FRONT BLACK PANEL



30" DRAWER FRONT BLACK PANEL



CUSTOM PANEL  
*Integrated Front Panel Kit Required*

**PRODUCT SPECIFICATIONS**

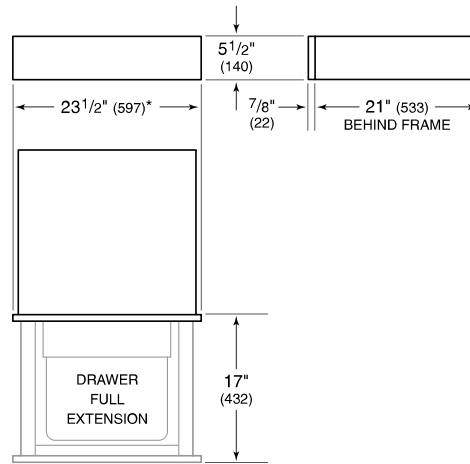
Model	VS24
Capacity	0.25 cu. ft.
Weight	76 lbs
Electrical Supply	3-prong grounding-type
Electrical Service	10 amp dedicated circuit
Power Cord Length	3 Feet
Receptacle	3-prong grounding-type

**ELECTRICAL**



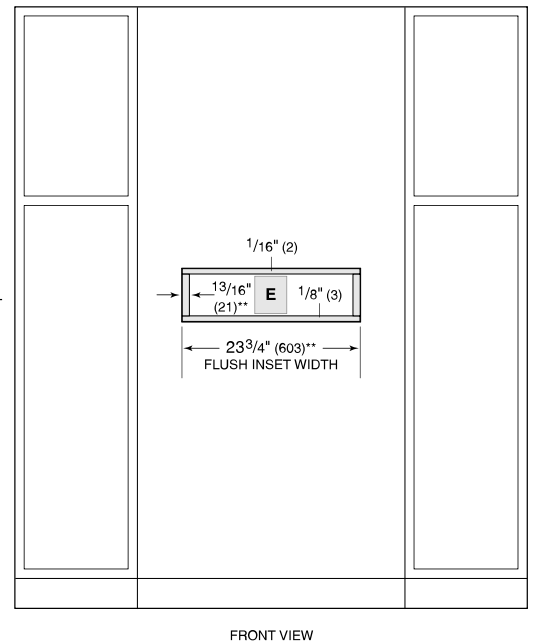
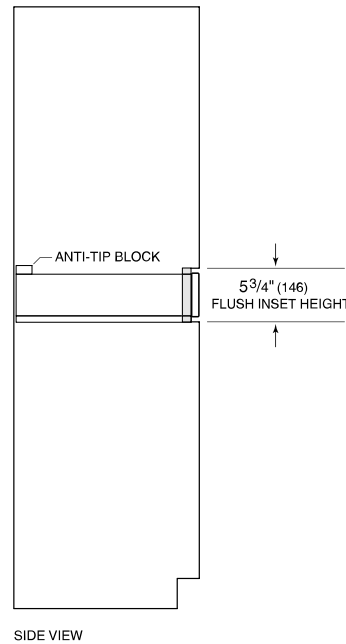
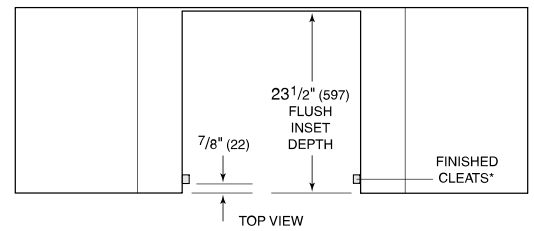
**NOTE:** Dimensions in parenthesis are in millimeters unless otherwise specified

**DIMENSIONS**



\*29 7/8" (759) width for 30" panel.

**FLUSH INSTALLATION**



\*Will be visible and should be finished to match cabinetry.  
 \*\*30 1/8" (765) width and 4" (102) cleat dimension for 30" panel.

**NOTE:** Flush inset width and height dimensions provide minimum reveals.