



OG36

FEATURES

- Two individually contained 25,000 Btu grill burners deliver exceptional high to low control
- Have it built-in or make it a free-standing cart
- Gain nuanced control and more taste from the direct and radiant heat provided by ceramic briquettes
- Designed with a stainless-steel cover
- Grill any time of day with LED-lit signature Wolf red control knobs
- The two position rotisserie handles dishes large and small with a 14,000 Btu infrared burner
- Resists the elements with its heavy-duty, all-weather stainless-steel construction
- Using our easy-open, double-wall hood provides more heat for more efficient grilling
- Illuminates your grilling surface with two powerful halogen lights
- Eliminates the need for a pilot light with electric hot surface ignitors
- Powerful 25,000 Btu infrared sear zone is perfect for searing in delicious flavor for mouthwatering results

ACCESSORIES

- 36" Grill Liner
- Black Knobs
- Built-In Cover
- Cart Cover
- Combo Door and Drawer
- Double Storage Drawer
- Griddle Plate
- LP Regulator Kit
- Outdoor Grill Cart
- Paper Towel Drawer
- Rotisserie Conversion
- Single Drawer Storage
- Triple Storage Drawer
- Trash/Recycling Drawers
- Access Doors
- Dry Storage

Accessories available through an authorized dealer.
For local dealer information, visit subzero-wolf.com/locator.



KNOB OPTIONS



GRILL SPECIFICATIONS

- Halogen lighting
- External reading thermometer
- Rotisserie
- 3 removable stainless steel burner grate; 1 warming rack
- Removable drip tray

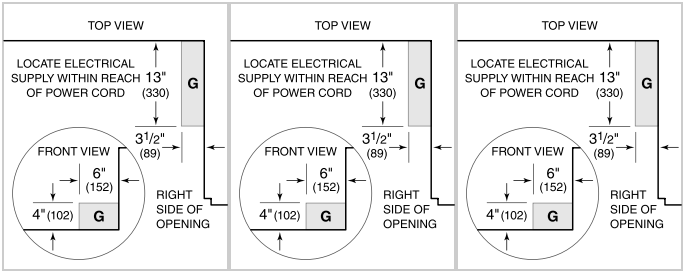
PRODUCT SPECIFICATIONS

Model	OG36
Dimensions	36"W x 27"H x 30"D
Weight	249 lbs
Electrical Supply	120 VAC, 60 Hz
Electrical Service	15 amp dedicated circuit
Gas Supply	3/4" ID line
Gas Inlet	1/2" NPT female
Power Cord Length	5 Feet
Receptacle	3-prong grounding-type

ELECTRICAL

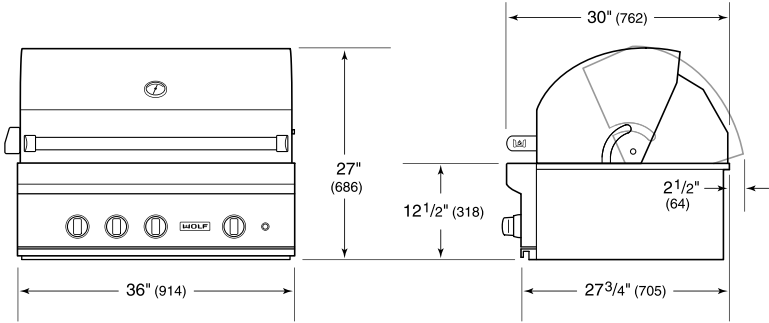
PLUMBING

GAS

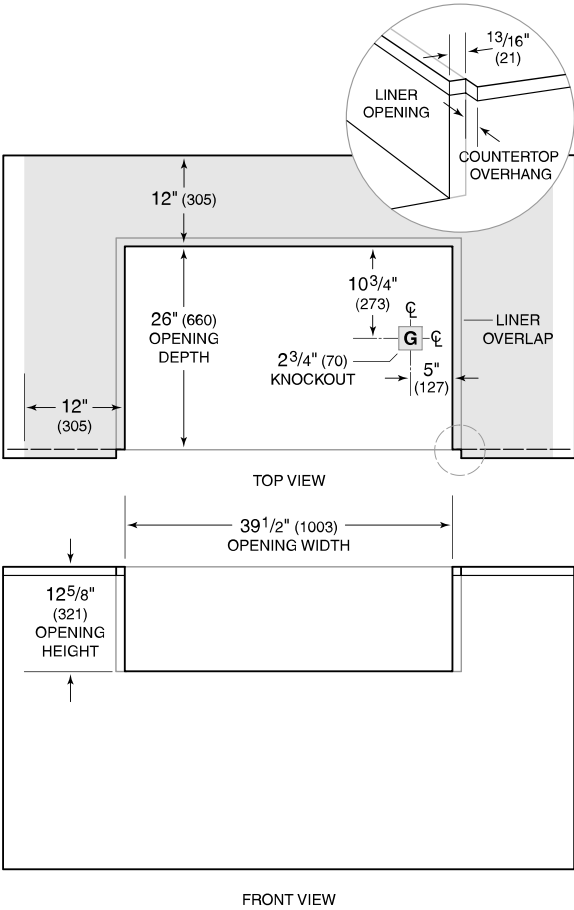


NOTE: Dimensions in parenthesis are in millimeters unless otherwise specified

DIMENSIONS



COMBUSTIBLE INSTALLATION



NOTE: Shaded area above countertop indicates minimum clearance to combustibles surfaces, combustibles materials cannot be located within this area.